

CITY OF CAPE TOWN
ISIXEKO SASEKAPA
STAD KAAPSTAD


THIS MAP WAS COMPILED BY:
CITY MAPS

Development Information and GIS

Tel: +27 21 487 2711
Fax: +27 21 487 2821
city.maps@capetown.gov.za

Please note:

- Business names, economic activity and contact details were collected through primary data collection.
- Business contact details were verified directly from the business' website.
- In the event that the name or economic activity of a business could not be identified during primary data collection and it does not have an active website or contact details available to confirm business details, it has been listed as unattainable.



0 55 110 220 330
Metres

1: 15 000

Transverse Mercator Projection,
Central Meridian 19° East,
WGS84 Ellipsoid using the
Hartebeeshoek94 Datum

INDUSTRIAL SURVEY
BRACKENFELL
INDUSTRIA



CITY OF CAPE TOWN
ISIXEKO SASEKAPA
STAD KAAPSTAD



Produced by Enterprise and Investment and
Organisational, Policy and Planning Departments:
Directorate of the Mayor

For more information on this industrial area contact:
Economic.Research@capetown.gov.za



Brackenfell Industria | 2017

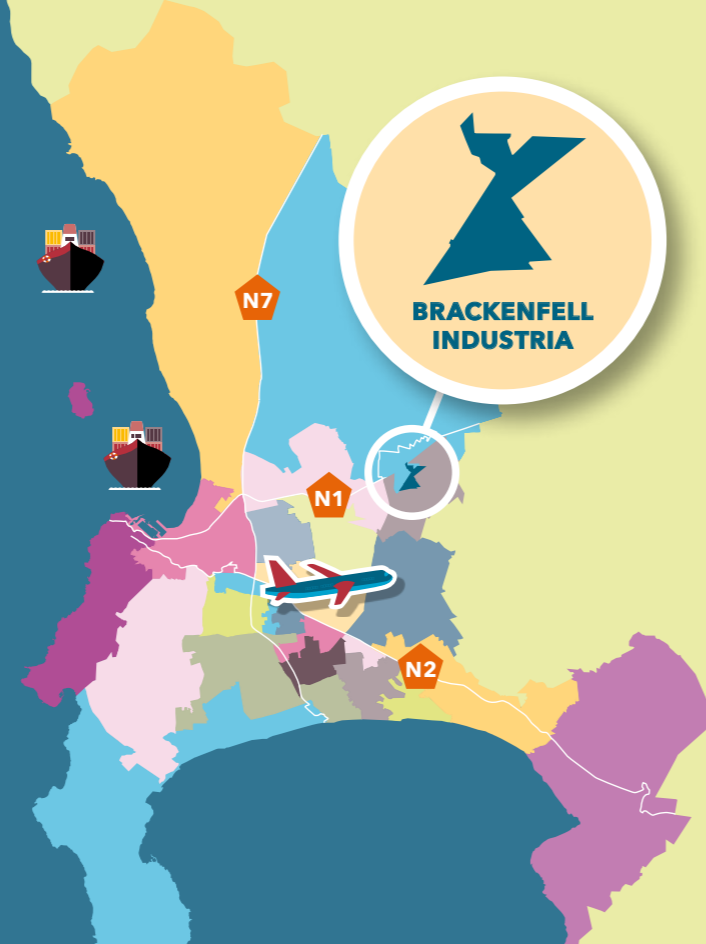
BRACKENFELL INDUSTRIA AT A GLANCE

Brackenfell Industria is one of the largest and oldest industrial areas in the northern suburbs of Cape Town situated at the intersection of Okavango and Old Paarl road. Brackenfell Industria is approximately 2 km away from the N1 and R300 highways, which are considered to be major quick access routes to the Cape Town CBD, Cape Town Harbour and Container depot. On the other hand it is about 24 km away from the Cape Town International Airport via the R300 route.

Brackenfell is geographically mapped across 586 land parcels. Of which 81% (475 land parcels) is occupied by economic activity and the remaining 19% (111 land parcels) is not economically active.

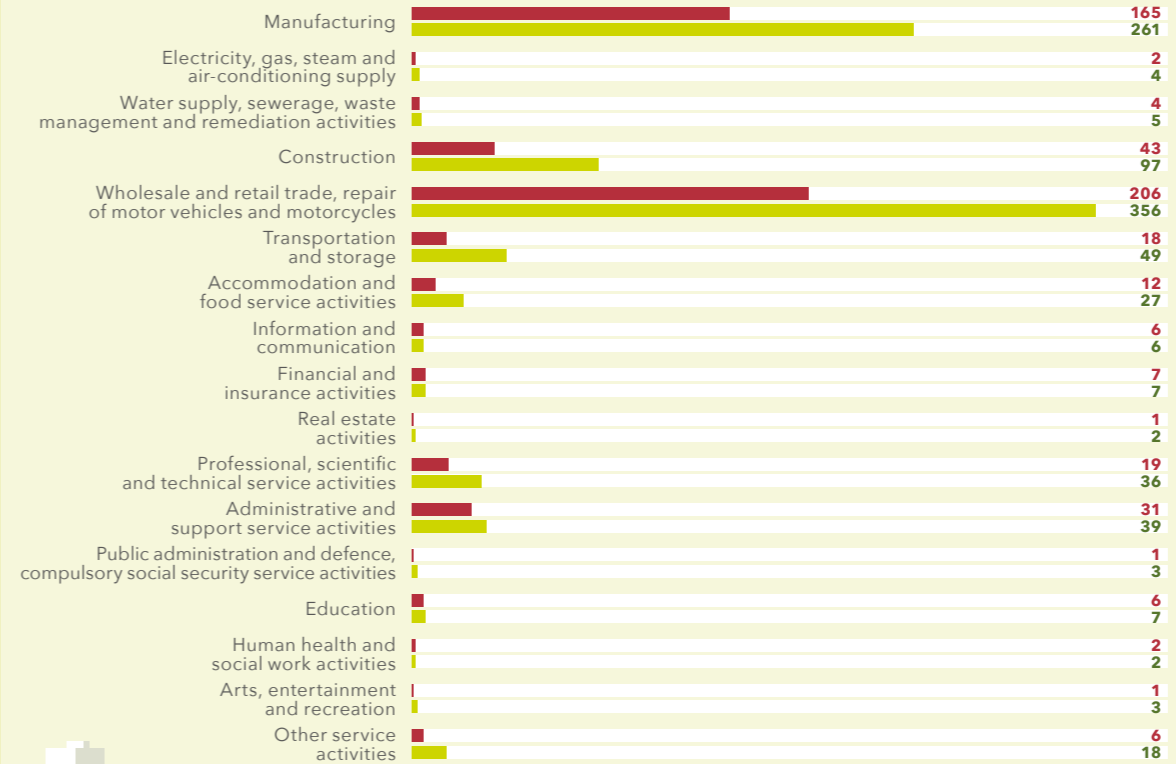
The 81% economically active land parcels in Brackenfell hosts 995 businesses. Of the 995 businesses, 922 businesses is occupied by economic activity while the remaining 86 businesses could not be identified.

586 LAND PARCELS **995 BUSINESSES**



TREND IN ECONOMIC ACTIVITY BETWEEN 2014 AND 2016

NO. OF BUSINESSES: 2014 VS 2016



Industrial area boundaries are subject to change over time so caution must be exercised in interpreting increases or decreases in the number of businesses per sector over the period.

INCREASED BY 96

Manufacturing

INCREASED BY 54

Construction

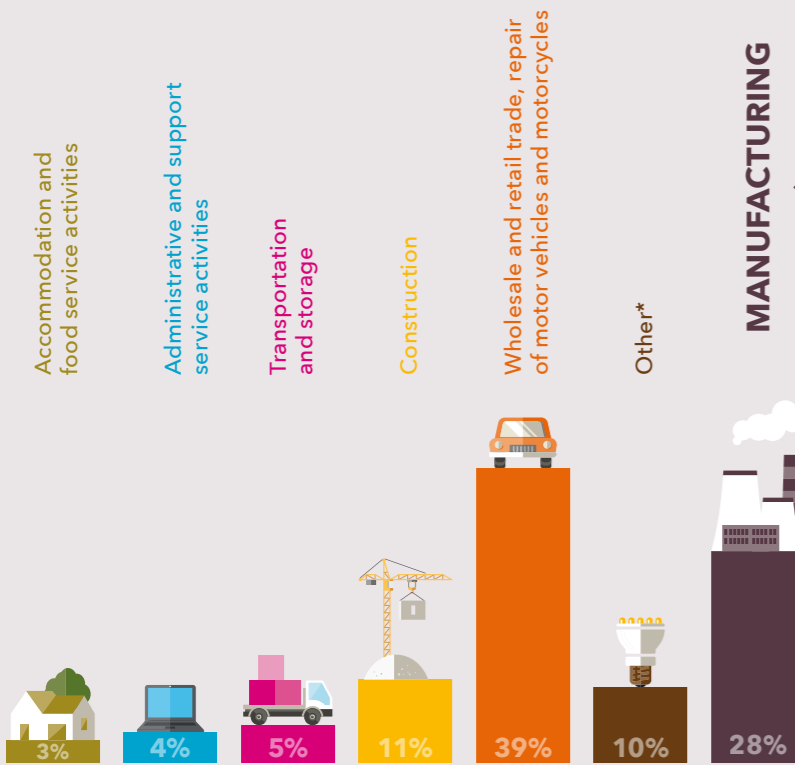
INCREASED BY 150

Wholesale and retail trade, repair of motor vehicles and motorcycles

DECREASED BY 17

Professional, scientific and technical service activities

ECONOMIC ACTIVITY OF BUSINESSES



| Number of manufacturing businesses per division | |
|--|----|
| Basic metals | 1 |
| Beverages | 1 |
| Chemicals and chemical products | 12 |
| Computer, electronic and optical products | 7 |
| Electrical equipment | 5 |
| Fabricated metal products, excluding machinery and equipment | 75 |
| Food products | 8 |
| Furniture | 20 |
| Leather and related products | 1 |
| Machinery and equipment not classified elsewhere | 29 |
| Motor vehicles, trailers and semi-trailers | 6 |
| Other manufacturing | 2 |
| Other non-metallic mineral products | 15 |
| Other transport equipment | 1 |
| Paper and paper products | 6 |
| Printing and reproduction of recorded media | 10 |
| Repair and installation of machinery and equipment | 23 |
| Rubber and plastic products | 22 |
| Textiles | 7 |
| Wearing apparel | 1 |
| Wood and product of wood and cork, except furniture; manufacture of articles of straw and plaiting materials | 9 |

PROPERTIES AVAILABLE

25

VACANT LAND PARCELS

3

VACANT BUILDINGS

RANGE OF SQM LAND:

1 010 000 m² - 1 236 000 m²

RANGE OF SQM LAND*:

4 000 m² - 6 000 m²

LAND PARCEL SIZE RANGE:

23
 0
 1
 0
 1

LAND PARCEL SIZE RANGE:

3
 0
 0
 0
 0

*Arts, entertainment and recreation; Education; Electricity, gas steam and air-conditioning supply; Financial and insurance; Human health and social work activities; Information and communication; Other service activities; Professional, scientific and technical services; Public administration and defence, compulsory social security service activities; Real Estate activities; Water supply, sewerage, waste management and remediation activities

*sqm of land parcel on which the business sits.